

**For Immediate Release**

Jennifer Carlo  
PCB Piezotronics, Inc. - Marketing Manager  
(800) 828-8840  
[jcarlo@pcb.com](mailto:jcarlo@pcb.com)

**PCB Piezotronics, Inc. Launches Miniature ICP Teardrop Accelerometer**

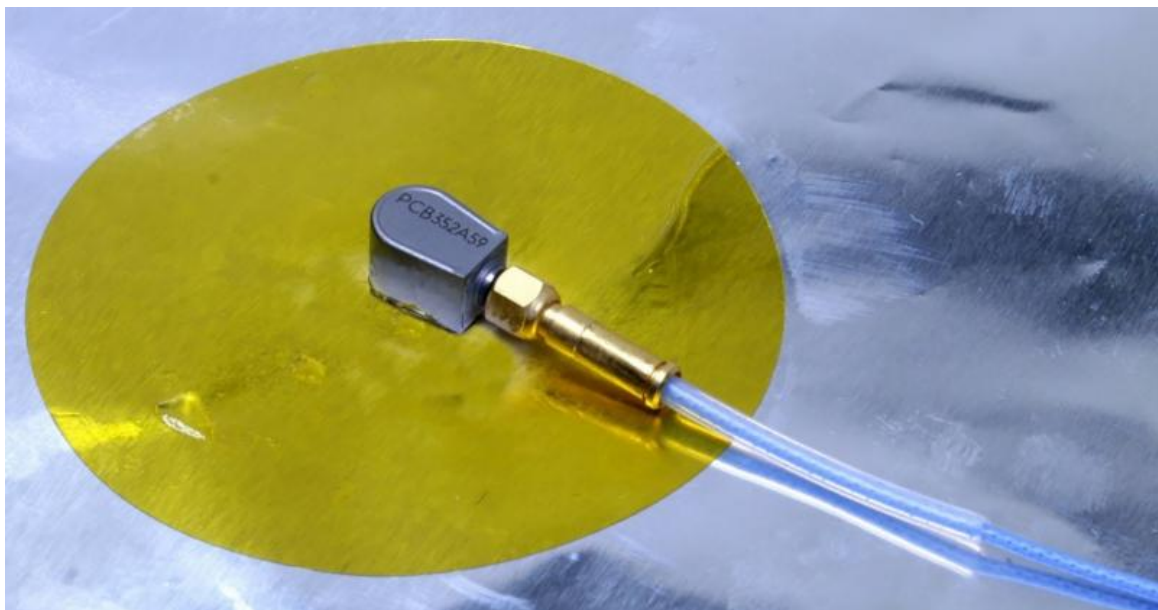
*Designed for vibration testing of small structures*

**December 11, 2018 DEPEW, NY** - PCB Piezotronics, Inc., a wholly owned subsidiary of MTS Systems Corporation (NASDAQ: MTSC), has released its smallest ICP teardrop accelerometer with a Transducer Electronic Data Sheet (TEDS) - Model 352A59. This single axis accelerometer was developed to minimize the effects of mass loading on small devices with an integral M3 connector and removable cable that can be easily routed within devices. The adhesive mounting and TEDS contribute to a quick, error-proof setup.

The 352A59 provides outstanding results during vibration testing of small structures, primarily because of its low 0.03 oz (0.9 gram) mass and sensitivity of 10 mV/g (1.0 mV/m/s<sup>2</sup>) over a frequency range from 1 to 10 kHz (+/-5%). The rugged, titanium housing enables Model 352A59 to operate in a range of +/- 500 g's ( ± 4900 m/s<sup>2</sup> pk) with shock limits to 20K-g's (± 98,000 m/s<sup>2</sup> pk).

Suggested applications include:

- Satellite & aircraft structures
- Military & consumer electronics
- General product validation



**Model 352A59**

[Model 352A59](#) is available for immediate shipment. Visit [www.pcb.com](http://www.pcb.com) for additional information or contact Kevin Kolmetz, PCB Product Marketing Manager at (800) 828-8840 x2213 or [kkolmetz@pcb.com](mailto:kkolmetz@pcb.com).

**About PCB Piezotronics, Inc.**

PCB Piezotronics, Inc., is a designer and manufacturer of microphones, vibration, pressure, force, torque, load, and strain sensors, as well as the pioneer of ICP technology used by design engineers and predictive maintenance professionals worldwide for test, measurement, monitoring, and control requirements in automotive, aerospace, industrial, R&D, military, educational, commercial, OEM applications, and more. With a worldwide customer support team, 24-hour Sensor Line, and a global distribution network, PCB is committed to Total Customer Satisfaction. Visit [www.pcb.com](http://www.pcb.com) for more information. PCB Piezotronics, Inc. is a wholly owned subsidiary of MTS Systems Corporation. Additional information on MTS can be found at [www.mts.com](http://www.mts.com).

###